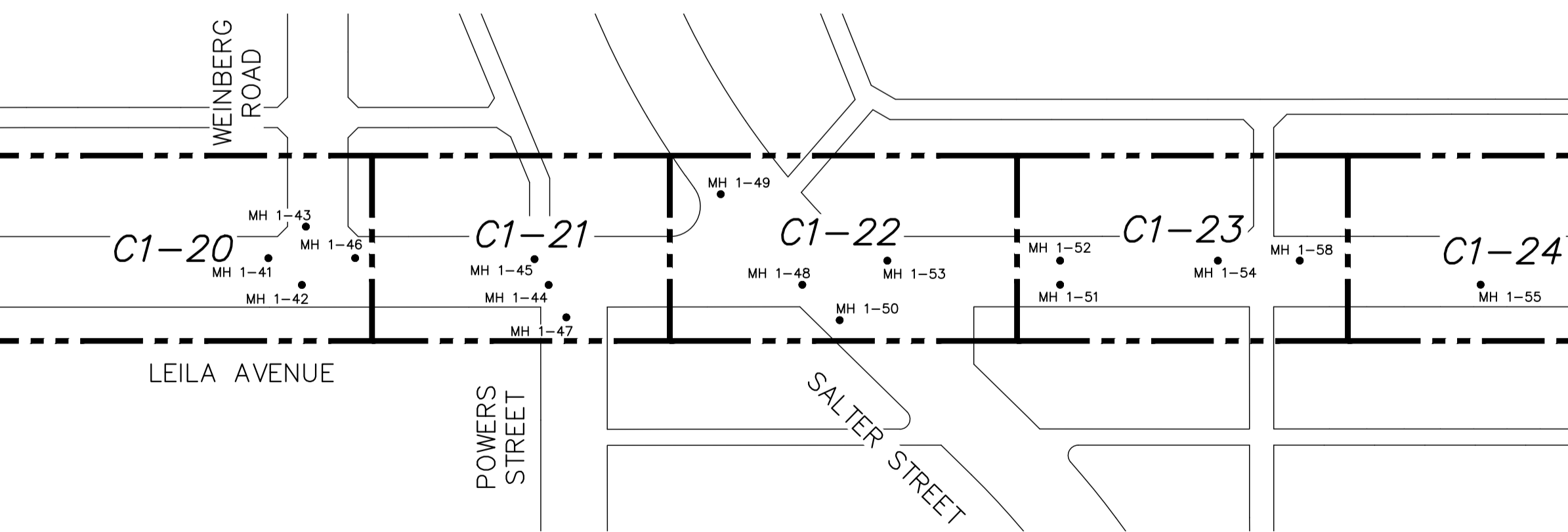
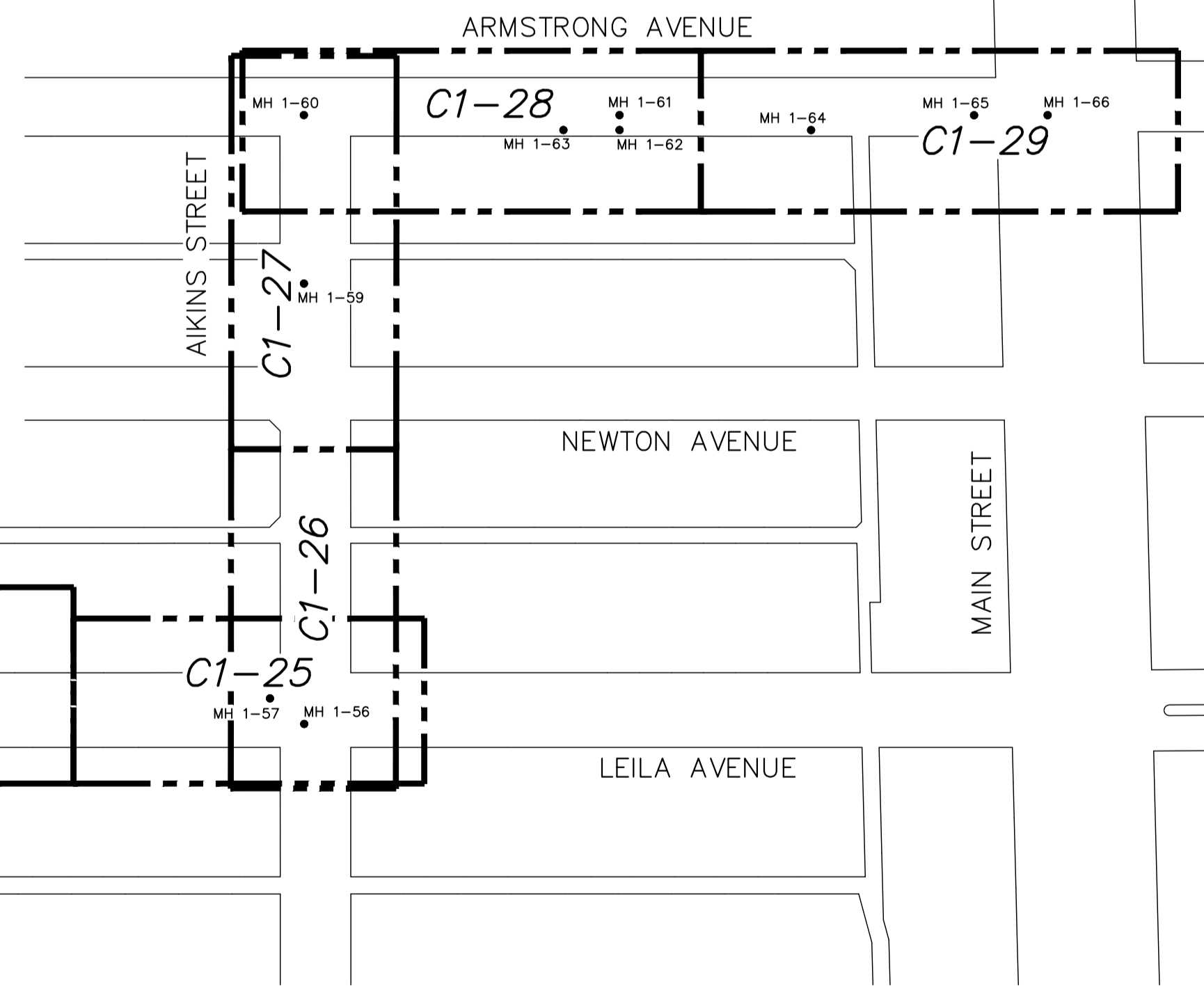


MANHOLE NUMBER	MANHOLE NORTHING	MANHOLE EASTING
MH 1-1	5535059.83	632864.64
MH 1-2	5535081.59	632936.47
MH 1-3	5535060.67	632981.13
MH 1-4	5535033.69	632967.72
MH 1-5	5535005.97	633097.94
MH 1-7	5534972.08	633170.28
MH 1-8	5534944.51	633160.85
MH 1-9	5534907.09	633309.05
MH 1-10	5534879.99	633299.96
MH 1-11	5534812.74	633443.34
MH 1-12	5534833.54	633466.08
MH 1-13	5534764.40	633613.70
MH 1-14	5534747.43	633601.27
MH 1-15	5534793.71	633502.52

MANHOLE NUMBER	MANHOLE NORTHING	MANHOLE EASTING
MH 1-16	5534692.74	633717.99
MH 1-17	5534702.08	633746.77
MH 1-18	5534684.12	633736.83
MH 1-19	5534649.45	633859.16
MH 1-20	5534613.66	633935.57
MH 1-21	5534594.58	633926.64
MH 1-22	5534677.61	633749.25
MH 1-23	5534533.40	634057.33
MH 1-24	5534590.48	633985.10
MH 1-25	5534526.48	634122.05
MH 1-26	5534480.60	634219.58
MH 1-27	5534461.50	634210.66
MH 1-28	5534516.38	634093.59
MH 1-29	5534434.19	634268.93

MANHOLE NUMBER	MANHOLE NORTHING	MANHOLE EASTING
MH 1-30	5534446.43	634288.96
MH 1-31	5534423.03	634293.12
MH 1-33	5534356.20	634435.86
MH 1-34	5534247.03	634384.75
MH 1-35	5534317.39	634518.75
MH 1-36	5534312.21	634516.28
MH 1-37	5534332.93	634472.09
MH 1-38	5534272.17	634615.34
MH 1-39	5534279.51	634618.78
MH 1-40	5534354.60	634458.46
MH 1-41	5534232.36	634719.40
MH 1-42	5534220.74	634725.15
MH 1-43	5534236.17	634733.72
MH 1-44	5534189.10	634729.69



MANHOLE NUMBER	MANHOLE NORTHING	MANHOLE EASTING
MH 1-45	5534197.96	634792.15
MH 1-46	5534221.25	634743.18
MH 1-47	5534177.96	634793.39
MH 1-48	5534156.60	634862.17
MH 1-49	5534191.84	634851.45
MH 1-50	5534142.14	634867.87
MH 1-51	5534123.55	634932.76
MH 1-52	5534130.13	634935.84
MH 1-53	5534152.29	634888.52
MH 1-54	5534109.91	634979.02
MH 1-55	5534069.63	635047.87
MH 1-56	5534016.33	635161.65

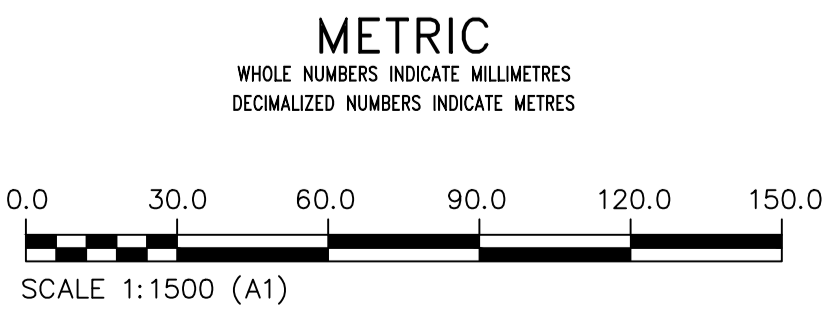
MANHOLE NUMBER	MANHOLE NORTHING	MANHOLE EASTING
MH 1-57	5534027.07	635155.90
MH 1-58	5534099.41	635001.44
MH 1-59	5534130.05	635214.86
MH 1-60	5534173.56	635235.21
MH 1-61	5534135.37	635316.70
MH 1-63	5534138.30	635300.40
MH 1-64	5534108.33	635364.34
MH 1-65	5534092.45	635408.21
MH 1-66	5534083.57	635427.21

NOTES:

- 1200# AND 1500# MANHOLES WITH MODIFIED STANDARD DETAIL (SEE DRAWING 13685) ARE THE FOLLOWING:
MH1-1, MH1-2, MH1-3, MH1-4, MH1-5, MH1-7, MH1-8, MH1-9, MH1-10, MH1-11, MH1-12, MH1-13, MH1-17, MH1-18, MH1-19, MH1-20, MH1-24, MH1-25, MH1-26, MH1-31, MH1-33, MH1-35, MH1-38, MH1-45 AND MH1-49



FOR INDEX PAGE
SEE DWG 13643



WARNING

IF POWER EQUIPMENT OR EXPLOSIVES ARE TO BE USED FOR EXCAVATION ON THIS PROJECT THE CONTRACTOR MUST:

- 1) NOTIFY THE GAS COMPANY OF THE PROPOSED LOCATION OF EXCAVATION.
- 2) TAKE PRECAUTION TO AVOID DAMAGE TO GAS COMPANY INSTALLATIONS.

SEE PROVINCIAL REGULATION 210/72 FOR DETAILS

LOCATION APPROVED
UNDERGROUND STRUCTURES

SUPV. U/G STRUCTURES COMMITTEE DATE

NOTE:
LOCATION OF UNDERGROUND STRUCTURES AS SHOWN ARE BASED ON THE BEST INFORMATION AVAILABLE BUT NO GUARANTEE IS GIVEN THAT ALL EXISTING UTILITIES ARE SHOWN OR THAT THE GIVEN LOCATIONS ARE EXACT. CONFIRMATION OF EXISTENCE AND EXACT LOCATION OF ALL SERVICES MUST BE OBTAINED FROM THE INDIVIDUAL UTILITIES BEFORE PROCEEDING WITH CONSTRUCTION.

VERTICAL DATUM: CGVD28 (HT2.0 Geoid)	
HORIZONTAL DATUM: NAD83 (June 1990), Zone 14	
ISSUED FOR CONSTRUCTION	2026/03/10
DATE	BY
NO.	REVISIONS

KGS GROUP	
DESIGNED BY: MID	CHECKED BY: TLE
DRAWN BY: GEL	APPROVED BY: RBO
SCALE: HORIZONTAL 1:1500	RELEASED FOR CONSTRUCTION
VERTICAL: -	DUANE BAKER
DATE	DATE: 2026/03/12

ENGINEER'S SEAL

ORIGINAL DRAWING SEALED BY:
M.A. IANKOVA-DEDOVA
2026/03/11

CONSULTANT DRAWING NUMBER
C1-03

THE CITY OF WINNIPEG
WATER AND WASTE DEPARTMENT
ENGINEERING SERVICES DIVISION

ARMSTRONG SEWER RELIEF WORKS
CONTRACT 1
LOCATION PLAN & MANHOLE COORDINATES TABLE

SHEET 3 OF 46
CITY DRAWING NUMBER 13644